

# U.S. TSUBAKI RS ROLLER CHAIN

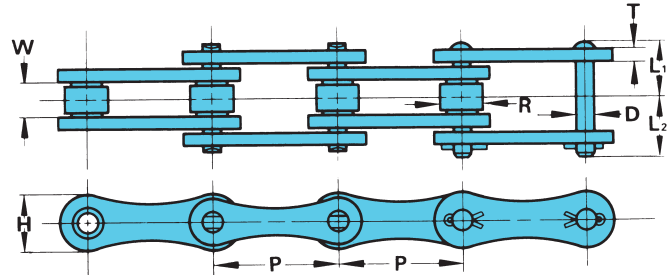
## RS Double Pitch Roller Chains

### RS DOUBLE PITCH ROLLER CHAINS



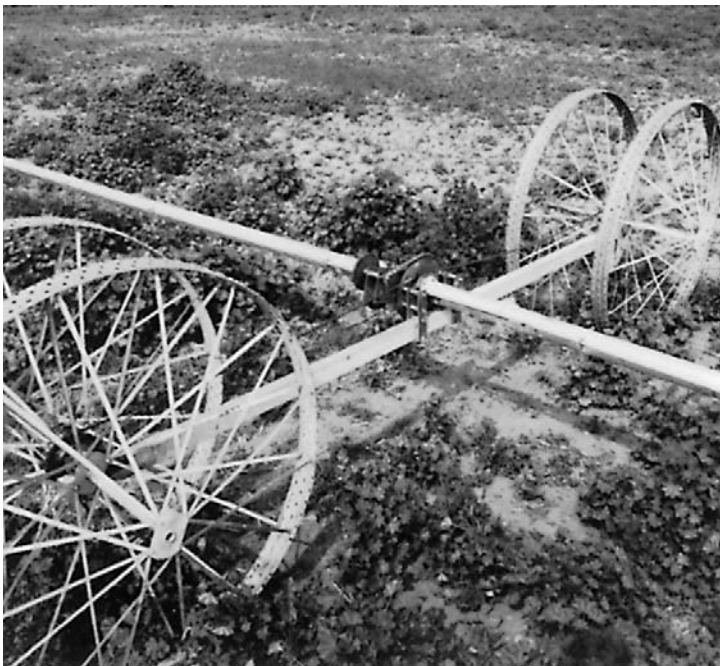
An economical choice in drive applications where the speed is low, the load moderate, or the center distance relatively long.

U.S. Tsubaki Double Pitch Drive Chains are also available in stainless steel, nickel-plated, and NEPTUNE®.



U.S. TSUBAKI Chain No.	Pitch P	Roller Dia. R	Width Between Roller Link Plates W	Pin			Link Plate		Average Tensile Strength lbs.	Approx. Weight lbs./ft.	No. of Links per 10 ft.
				D	L <sub>1</sub>	L <sub>2</sub>	T	H			
A2040	1.000	.312	.312	.156	.325	.380	.060	.472	3,700	.26	120
A2050	1.250	.400	.375	.200	.406	.469	.080	.591	6,100	.42	96
A2060	1.500	.469	.500	.234	.506	.600	.094	.709	8,500	.63	80
A2080	2.000	.625	.625	.312	.640	.754	.125	.906	14,500	1.03	60

Note: Spring clip type connecting links will be provided for A2040 ~ A2060, unless otherwise specified.



### Sprockets for RS Double Pitch Roller Chain

There are special sprockets for RS Double Pitch roller chains. However, ASME/ANSI standard sprockets are also available for use, if the roller is a standard roller and the number of sprocket teeth is 30 or over. Please contact U.S. Tsubaki for details of special sprockets.