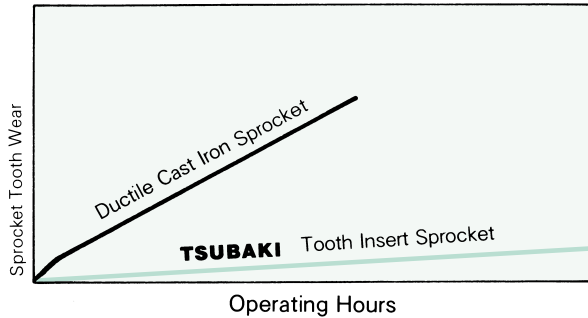


Specialty Chain Sprockets

Tooth Insert Sprockets

Sprocket Wear



Tooth Insert Sprockets greatly outperform cast iron sprockets by at least 300%, as shown above.

BENEFITS

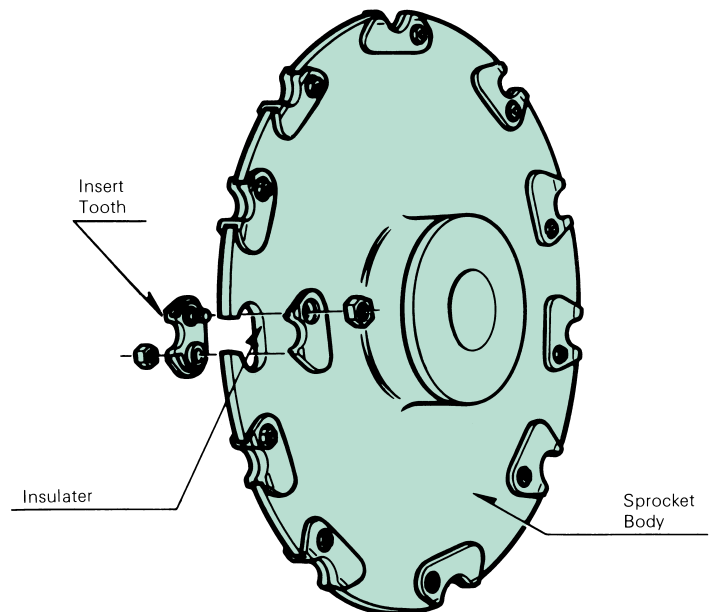
- **Reliable Performance**
- **Corrosion Protection**
- **Superb Wear Resistance**
- **Low-Cost Maintenance**

Stainless steel tooth insert sprockets for Sanitation Chain

Sand and dirt scrapers create special problems for chains and for sprockets, which must offer reliable performance, a long working life, and resistance against corrosion and wear.

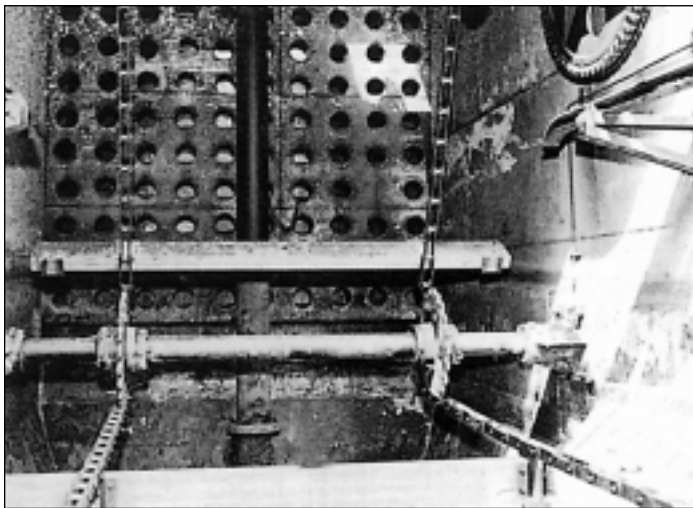
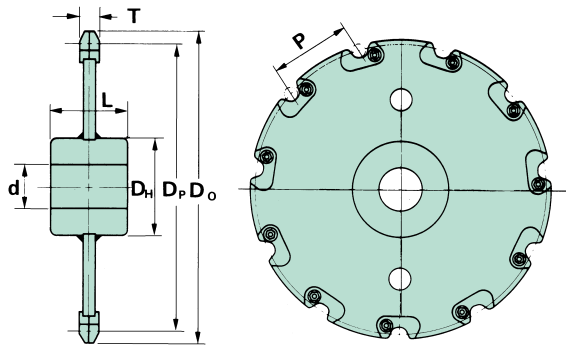
Stainless Steel Tooth Insert Sprockets used with Sanitation Chain keep sand and dirt scrapers operating efficiently. The stainless steel insert teeth prevent galvanic corrosion and offer superb wear and corrosion resistance. You get efficiency, economy, and performance.

Construction



Note: Sprockets with different number of teeth are available upon request.

ACR Type Collector Tank Sprockets



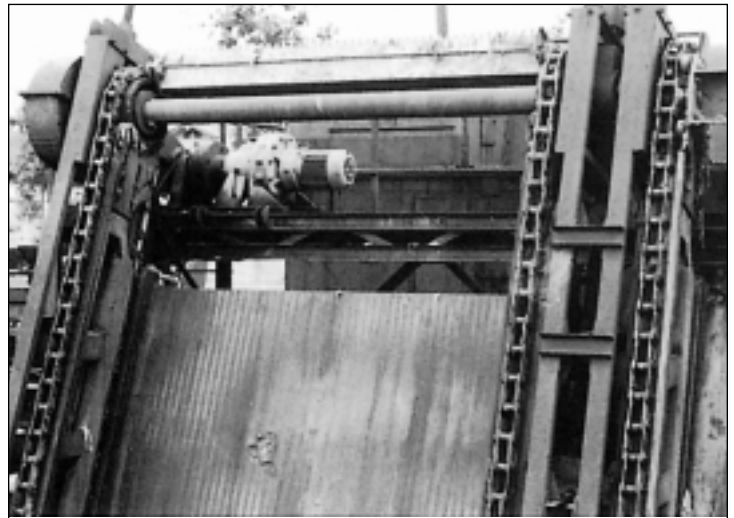
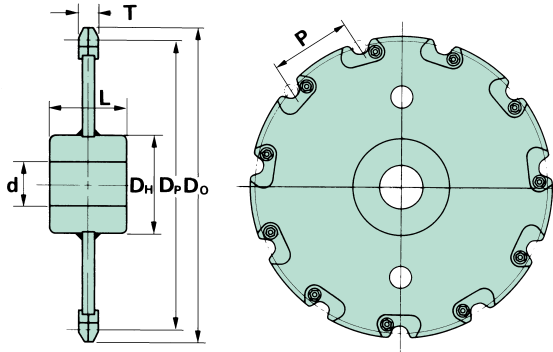
ACR810 Collector Tank Sprockets

All dimensions are in inches unless otherwise specified.

6.000 Pitch								
No. of Teeth	Outside Diameter	Pitch Diameter	Bore Diameter		Hub Diameter	Hub Length	Tooth Thickness	Approximate Weight (lbs./piece)
			Minimum	Maximum				
	D_O	D_P	d	d	D_H	L	T	
9	18.504	17.543	2.362	3.937	5.906	5.512	.709	62
9	18.504	17.543	3.150	4.724	7.087	5.512	.709	75
9	18.504	17.543	3.543	5.512	8.268	5.512	.709	93
10	20.353	19.417	2.362	3.937	5.906	5.512	.709	66
10	20.353	19.417	3.150	4.724	7.087	5.512	.709	79
10	20.353	19.417	3.543	5.512	8.268	5.512	.709	97
11	22.244	21.295	2.362	3.937	5.906	5.512	.709	73
11	22.244	21.295	3.150	4.724	7.087	5.512	.709	86
11	22.244	21.295	3.543	5.512	8.268	5.512	.709	104
12	24.094	23.181	2.362	3.937	5.906	5.512	.709	82
12	24.094	23.181	3.150	4.724	7.087	5.512	.709	95
12	24.094	23.181	3.543	5.512	8.268	5.512	.709	112



JAC Type Bar Screen Sprockets



JAC08152-S Bar Screen Sprockets

All dimensions are in inches unless otherwise specified.

6.000 Pitch

No. of Teeth	Outside Diameter	Pitch Diameter	Bore Diameter		Hub Diameter	Hub Length	Tooth Thickness	Approximate Weight (lbs./piece)
			Minimum	Maximum				
	D_O	D_P	d	d	D_H	L	T	
9	18.583	17.543	1.967	3.150	5.118	3.937	.866	55
9	18.583	17.543	2.362	3.543	5.512	3.937	.866	57
9	18.583	17.543	2.756	3.937	5.906	3.937	.866	59
10	20.433	19.417	1.967	3.150	5.118	3.937	.866	62
10	20.433	19.417	2.362	3.543	5.512	3.937	.866	64
10	20.433	19.417	2.756	3.937	5.906	3.937	.866	66
11	22.323	21.295	2.362	3.937	5.906	4.724	.866	81
11	22.323	21.295	2.756	4.331	6.299	4.724	.866	84
11	22.323	21.295	3.150	4.724	7.087	4.724	.866	92
12	24.173	23.181	2.362	3.937	5.906	4.724	.866	90
12	24.173	23.181	2.756	4.331	6.299	4.724	.866	92
12	24.173	23.181	3.150	4.724	7.087	4.724	.866	101

Note: Sprockets with different number of teeth are available upon request.

JAC10152-S Bar Screen Sprockets

All dimensions are in inches unless otherwise specified.

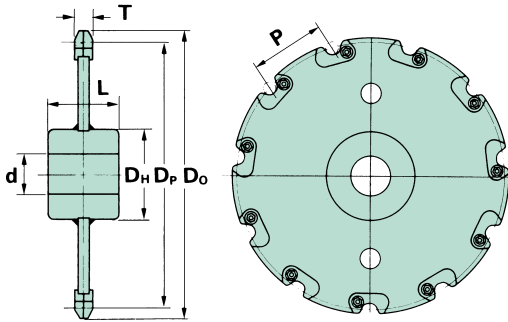
6.000 Pitch								
No. of Teeth	Outside Diameter	Pitch Diameter	Bore Diameter		Hub Diameter	Hub Length	Tooth Thickness	Approximate Weight (lbs./piece)
			Minimum	Maximum				
	D_O	D_P	d	d	D_H	L	T	
9	18.504	17.543	2.362	3.937	5.906	4.724	.945	66
9	18.504	17.543	2.756	4.331	6.299	4.724	.945	68
9	18.504	17.543	3.150	4.724	7.087	4.724	.945	75
10	20.354	19.417	2.362	3.937	5.906	4.724	.945	73
10	20.354	19.417	2.756	4.331	6.299	4.724	.945	75
10	20.354	19.417	3.150	4.724	7.087	4.724	.945	84
11	22.244	21.295	2.756	4.331	6.299	5.118	.945	86
11	22.244	21.295	3.150	4.724	7.087	5.118	.945	95
11	22.244	21.295	3.543	5.118	7.480	5.118	.945	99
12	24.094	23.181	2.756	4.331	6.299	5.118	.945	95
12	24.094	23.181	3.150	4.724	7.087	5.118	.945	103
12	24.094	23.181	3.543	5.118	7.480	5.118	.945	108

JAC6205-S Bar Screen Sprockets

6.000 Pitch								
No. of Teeth	Outside Diameter	Pitch Diameter	Bore Diameter		Hub Diameter	Hub Length	Tooth Thickness	Approximate Weight (lbs./piece)
			Minimum	Maximum				
	D_O	D_P	d	d	D_H	L	T	
9	18.898	17.543	2.756	4.331	6.299	5.118	1.181	84
9	18.898	17.543	3.150	4.724	7.087	5.118	1.181	88
9	18.898	17.543	3.543	5.118	7.480	5.118	1.181	95
10	20.748	19.417	2.756	4.331	6.299	5.118	1.181	92
10	20.748	19.417	3.150	4.724	7.087	5.118	1.181	97
10	20.748	19.417	3.543	5.118	7.480	5.118	1.181	103
11	22.598	21.295	3.543	5.118	7.480	6.299	1.181	128
11	22.598	21.295	3.937	5.512	8.268	6.299	1.181	143
11	22.598	21.295	4.331	5.906	9.055	6.299	1.181	152
12	24.449	23.181	3.543	5.118	7.480	6.299	1.181	139
12	24.449	23.181	3.937	5.512	8.268	6.299	1.181	152
12	24.449	23.181	4.331	5.906	9.055	6.299	1.181	165



ACS Type Heavy Duty Collector Tank Sprockets



ACS13103W Heavy Duty Collector Tank Sprockets

All dimensions are in inches unless otherwise specified.

4.063 Pitch

No. of Teeth	Outside Diameter	Pitch Diameter	Bore Diameter		Hub Diameter	Hub Length	Tooth Thickness	Approximate Weight (lbs./piece)
			Minimum	Maximum				
	D_O	D_P	d	d	D_H	L	T	
9	12.913	11.878	1.969	3.150	5.118	4.331	.866	37
9	12.913	11.878	2.362	3.543	5.512	4.331	.866	40
9	12.913	11.878	2.756	3.937	5.906	4.331	.866	42
10	14.173	13.148	1.969	3.150	5.118	4.331	.866	42
10	14.173	13.148	2.362	3.543	5.512	4.331	.866	44
10	14.173	13.148	2.756	3.937	5.906	4.331	.866	46
11	15.433	14.421	1.969	3.150	5.118	4.331	.866	44
11	15.433	14.421	2.362	3.543	5.512	4.331	.866	46
11	15.433	14.421	2.756	3.937	5.906	4.331	.866	48
12	16.693	15.697	1.969	3.150	5.118	4.331	.866	48
12	16.693	15.697	2.362	3.543	5.512	4.331	.866	51
12	16.693	15.697	2.756	3.937	5.906	4.331	.866	53
13	17.992	16.976	1.969	3.150	5.118	4.331	.866	55
13	17.992	16.976	2.362	3.543	5.512	4.331	.866	57
13	17.992	16.976	2.756	3.937	5.906	4.331	.866	59

Note: Sprockets with different number of teeth are available upon request.

ACS13152W Heavy Duty Collector Tank Sprockets

All dimensions are in inches unless otherwise specified.

6.000 Pitch								
No. of Teeth	Outside Diameter	Pitch Diameter	Bore Diameter		Hub Diameter	Hub Length	Tooth Thickness	Approximate Weight (lbs./piece)
			Minimum	Maximum				
	D_O	D_P	d	d	D_H	L	T	
9	18.543	17.543	2.362	3.937	5.906	5.118	.866	66
9	18.543	17.543	2.756	4.331	6.693	5.118	.866	75
9	18.543	17.543	3.150	4.724	7.087	5.118	.866	79
10	20.394	19.417	2.362	3.937	5.906	5.118	.866	73
10	20.394	19.417	2.756	4.331	6.693	5.118	.866	81
10	20.394	19.417	3.150	4.724	7.087	5.118	.866	86
11	22.283	21.295	2.362	3.937	5.906	5.118	.866	81
11	22.283	21.295	2.756	4.331	6.693	5.118	.866	90
11	22.283	21.295	3.150	4.724	7.087	5.118	.866	95
12	23.134	23.181	2.362	3.937	5.906	5.118	.866	92
12	23.134	23.181	2.756	4.331	6.693	5.118	.866	101
12	23.134	23.181	3.150	4.724	7.087	5.118	.866	106

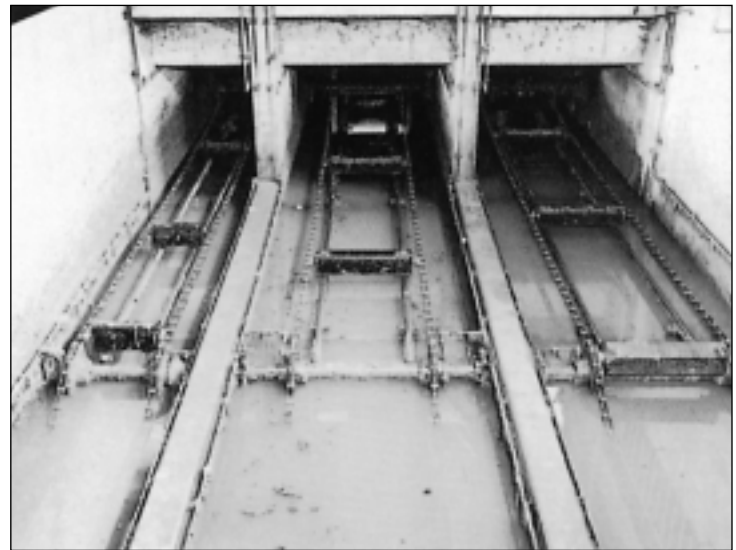
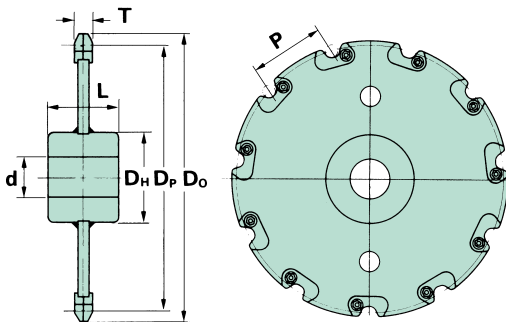
ACS15152W Heavy Duty Collector Tank Sprockets

6.000 Pitch								
No. of Teeth	Outside Diameter	Pitch Diameter	Bore Diameter		Hub Diameter	Hub Length	Tooth Thickness	Approximate Weight (lbs./piece)
			Minimum	Maximum				
	D_O	D_P	d	d	D_H	L	T	
9	18.504	17.543	2.362	3.937	5.906	5.118	.866	66
9	18.504	17.543	2.756	4.331	6.693	5.118	.866	75
9	18.504	17.543	3.150	4.724	7.087	5.118	.866	79
10	20.354	19.417	2.362	3.937	5.906	5.118	.866	73
10	20.354	19.417	2.756	4.331	6.693	5.118	.866	81
10	20.354	19.417	3.150	4.724	7.087	5.118	.866	86
11	22.244	21.295	2.362	3.937	5.906	5.118	.866	81
11	22.244	21.295	2.756	4.331	6.693	5.118	.866	90
11	22.244	21.295	3.150	4.724	7.087	5.118	.866	95
12	24.094	23.181	2.362	3.937	5.906	5.118	.866	92
12	24.094	23.181	2.756	4.331	6.693	5.118	.866	101
12	24.094	23.181	3.150	4.724	7.087	5.118	.866	106



ACS Type Heavy Duty Collector Tank Sprockets

(Continued)



ACS19152W Heavy Duty Collector Tank Sprockets

All dimensions are in inches unless otherwise specified.

6.000 Pitch

No. of Teeth	Outside Diameter	Pitch Diameter	Bore Diameter		Hub Diameter	Hub Length	Tooth Thickness	Approximate Weight (lbs./piece)
			Minimum	Maximum				
	D_O	D_P	d	d	D_H	L	T	
9	18.504	17.543	3.150	4.724	7.087	5.512	.984	81
9	18.504	17.543	3.543	5.118	7.480	5.512	.984	86
9	18.504	17.543	3.937	5.512	8.268	5.512	.984	97
10	20.354	19.417	3.150	4.724	7.087	5.512	.984	88
10	20.354	19.417	3.543	5.118	7.480	5.512	.984	92
10	20.354	19.417	3.937	5.512	8.268	5.512	.984	103
11	22.244	21.295	3.150	4.724	7.087	5.512	.984	97
11	22.244	21.295	3.543	5.118	7.480	5.512	.984	101
11	22.244	21.295	3.937	5.512	8.268	5.512	.984	112
12	24.094	23.181	3.150	4.724	7.087	5.512	.984	106
12	24.094	23.181	3.543	5.118	7.480	5.512	.984	110
12	24.094	23.181	3.937	5.512	8.268	5.512	.984	121

Note: Sprockets with different number of teeth are available upon request.

ACS25152W Heavy Duty Collector Tank Sprockets

All dimensions are in inches unless otherwise specified.

6.000 Pitch								
No. of Teeth	Outside Diameter	Pitch Diameter	Bore Diameter		Hub Diameter	Hub Length	Tooth Thickness	Approximate Weight (lbs./piece)
			Minimum	Maximum				
	D_O	D_P	d	d	D_H	L	T	
9	18.504	17.543	3.150	4.724	7.087	5.512	.984	81
9	18.504	17.543	3.543	5.118	7.480	5.512	.984	86
9	18.504	17.543	3.937	5.512	8.268	5.512	.984	97
10	20.354	19.417	3.150	4.724	7.087	5.512	.984	88
10	20.354	19.417	3.543	5.118	7.480	5.512	.984	92
10	20.354	19.417	3.937	5.512	8.268	5.512	.984	103
11	22.244	21.295	3.150	4.724	7.087	5.512	.984	97
11	22.244	21.295	3.543	5.118	7.480	5.512	.984	101
11	22.244	21.295	3.937	5.512	8.268	5.512	.984	112
12	24.094	23.181	3.150	4.724	7.087	5.512	.984	106
12	24.094	23.181	3.543	5.118	7.480	5.512	.984	110
12	24.094	23.181	3.937	5.512	8.268	5.512	.984	121

ACS35152W Heavy Duty Collector Tank Sprockets

6.000 Pitch								
No. of Teeth	Outside Diameter	Pitch Diameter	Bore Diameter		Hub Diameter	Hub Length	Tooth Thickness	Approximate Weight (lbs./piece)
			Minimum	Maximum				
	D_O	D_P	d	d	D_H	L	T	
9	18.898	17.543	3.150	4.724	7.087	5.512	1.260	101
9	18.898	17.543	3.543	5.118	7.480	5.512	1.260	106
9	18.898	17.543	3.937	5.512	8.268	5.512	1.260	114
10	20.748	19.417	3.150	4.724	7.087	5.512	1.260	110
10	20.748	19.417	3.543	5.118	7.480	5.512	1.260	114
10	20.748	19.417	3.937	5.512	8.268	5.512	1.260	123
11	22.598	21.295	3.150	4.724	7.087	5.512	1.260	123
11	22.598	21.295	3.543	5.118	7.480	5.512	1.260	128
11	22.598	21.295	3.937	5.512	8.268	5.512	1.260	136
12	24.449	23.181	3.150	4.724	7.087	5.512	1.260	136
12	24.449	23.181	3.543	5.118	7.480	5.512	1.260	141
12	24.449	23.181	3.937	5.512	8.268	5.512	1.260	150